

CONSTRUCTION GUIDE (FREE EDITION)

# MARLENE



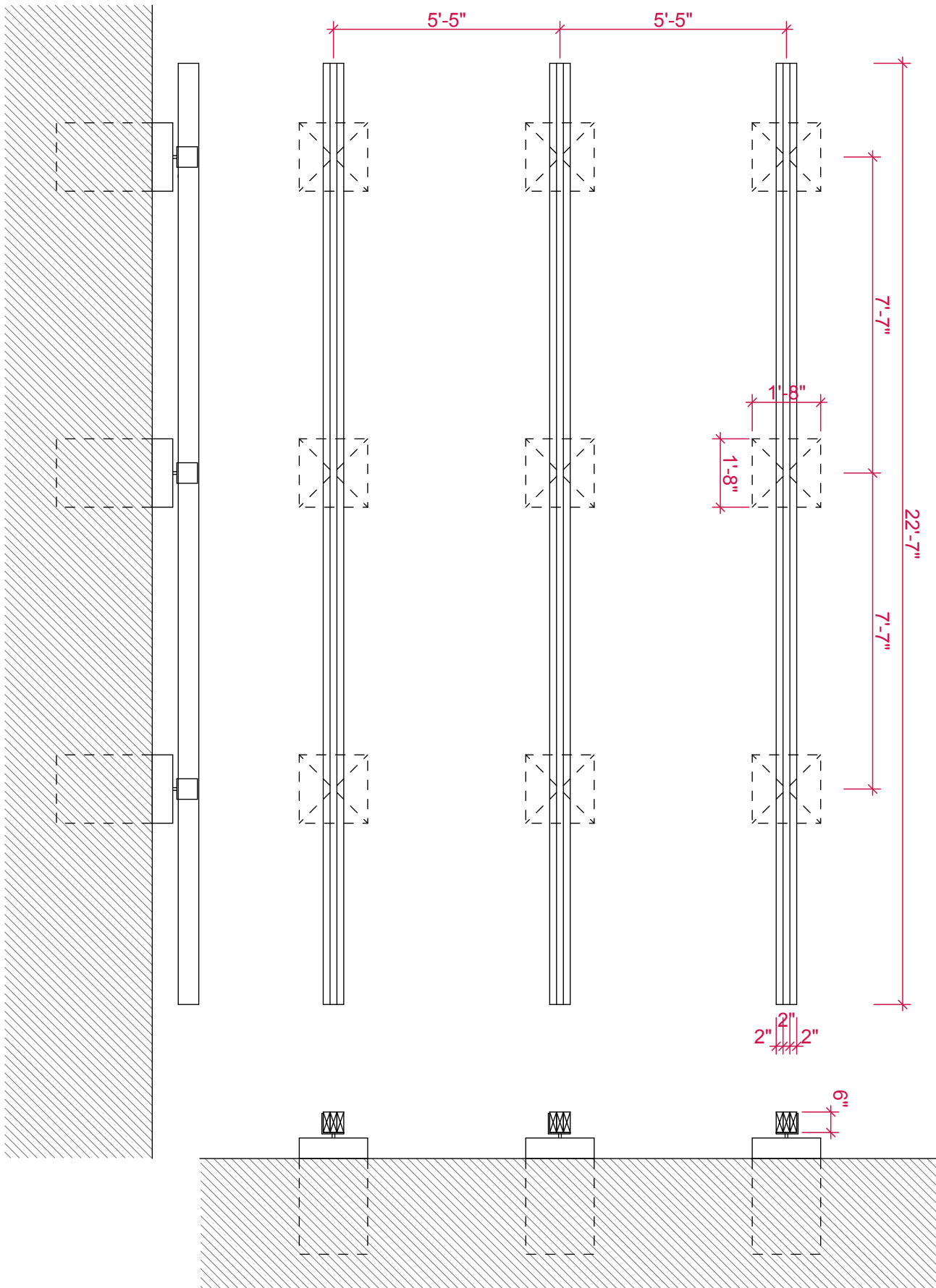
# Compare our Free vs. Premium plans

*(\*) - Partial dimensions in Free Edition*

Features	Free Edition	Premium Edition
Foundation Plans	✓	✓
Floor Plans	✓	✓
Cross Sections (*)	✓	✓
Elevations (*)	✓	✓
Drain & Water Schema	✓	✓
Electrical Wiring & Installation	✗	✓
Step-by-Step Construction Process	✗	✓
Full Materials & Cutting List	✗	✓
Metal Fasteners & Nails	✗	✓
Tools List	✗	✓
DWG Set of Plans	✗	✓
Technical Support	✗	✓
Plan Modification Services	✗	✓

[Click to get the Premium Plan](#)

# Foundation in imperial measurements

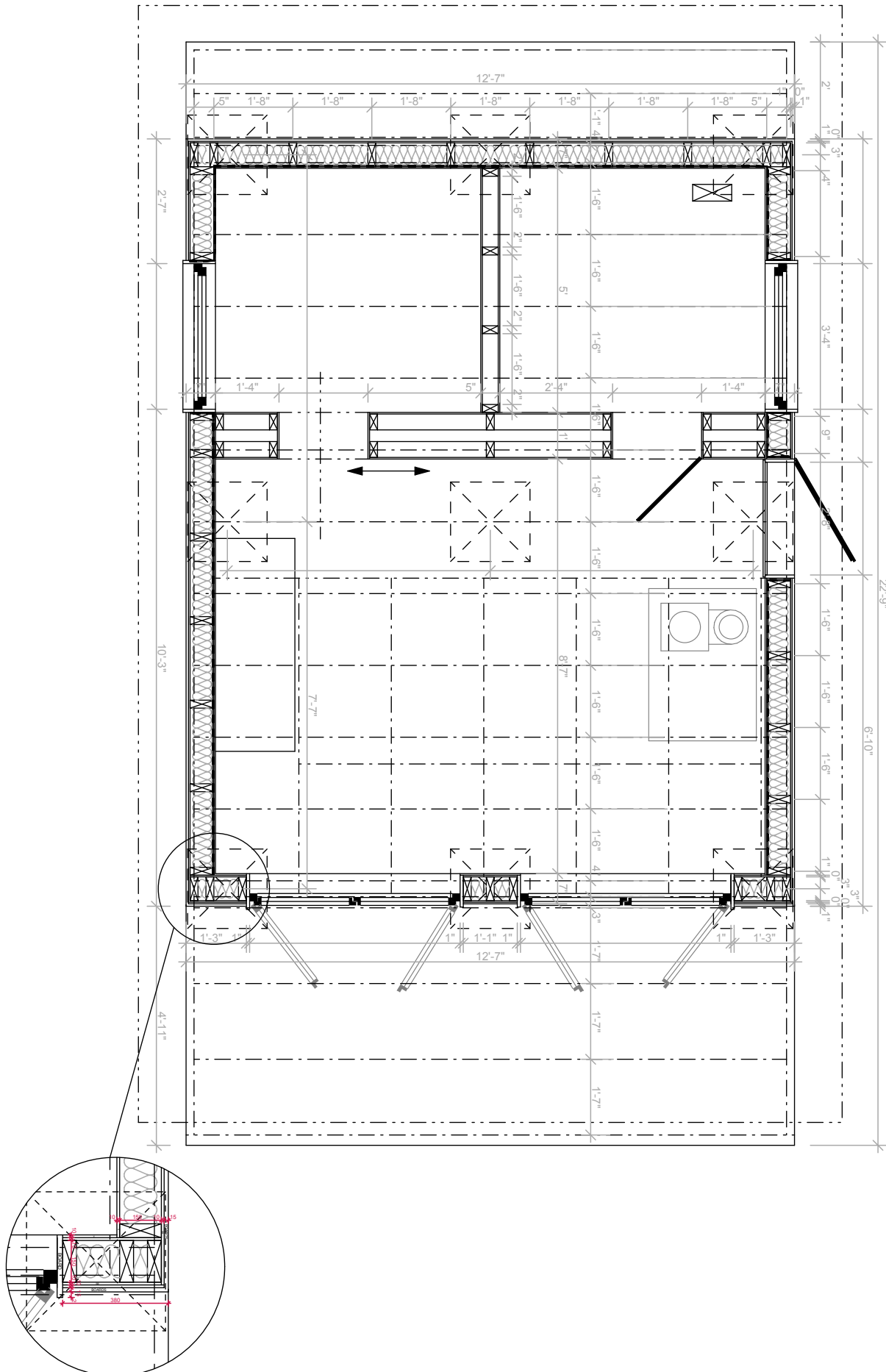


FOUNDATION  
1:40

MARLENE

Joshua Woodsman  
www.pinuphouses.com

# Layout in imperial measurements

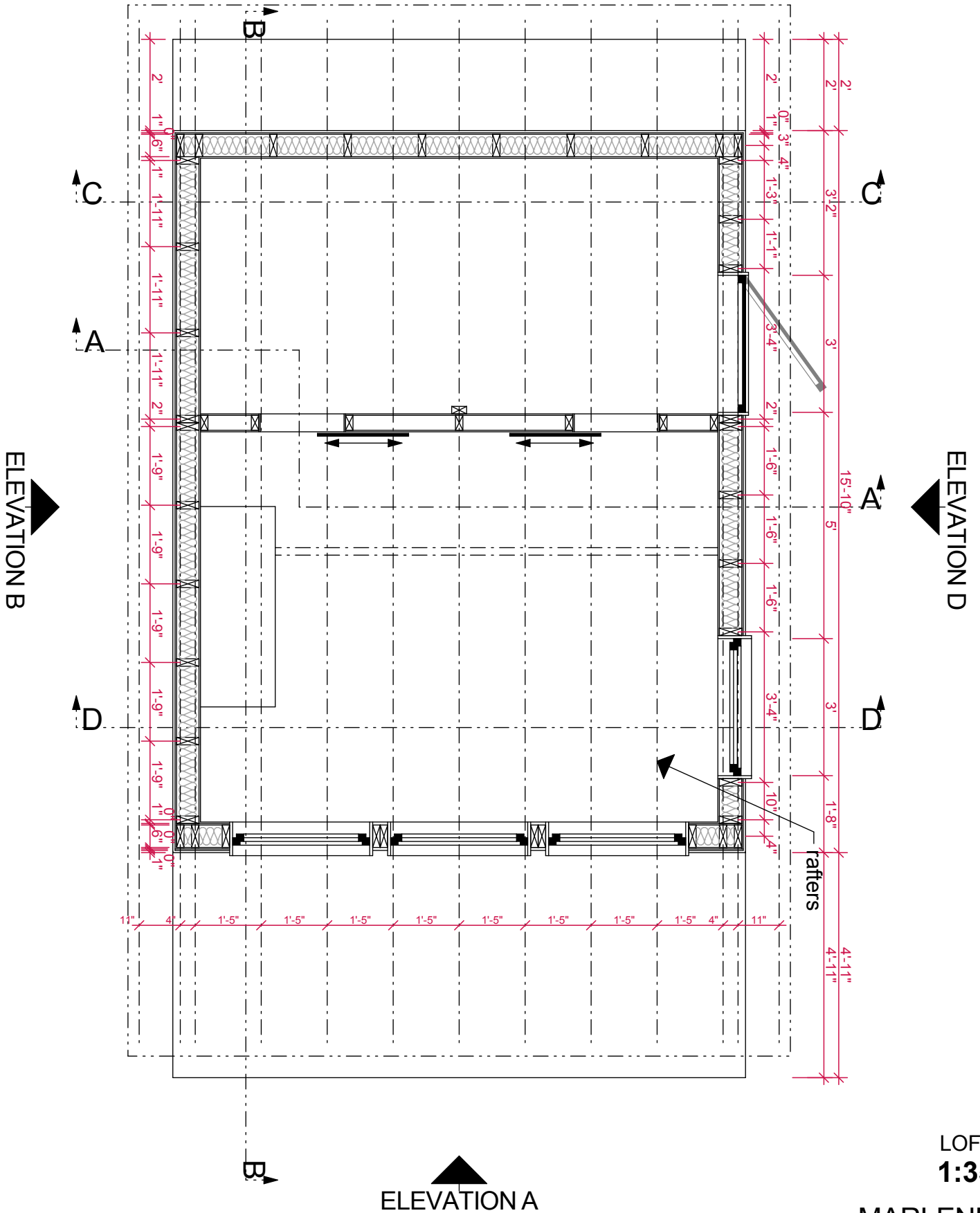


LAYOUT  
**1:20, 1:35**  
**MARLENE**

Joshua Woodsman  
www.pinuphouses.com

# Loft in imperial measurements

ELEVATION C



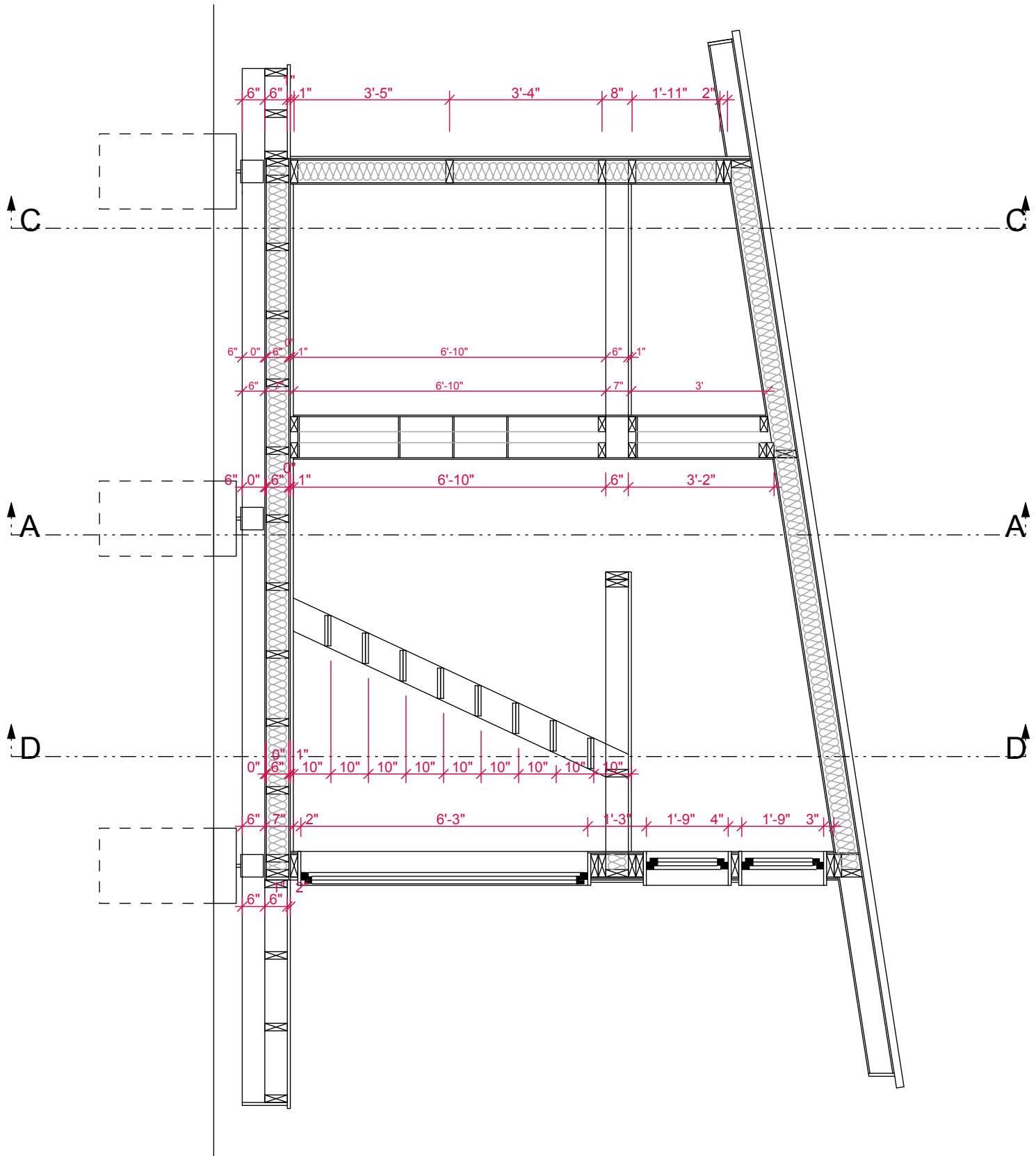
LOFT  
1:35

MARLENE

Joshua Woodsman  
www.pinuphouses.com



# Section B in imperial measurements

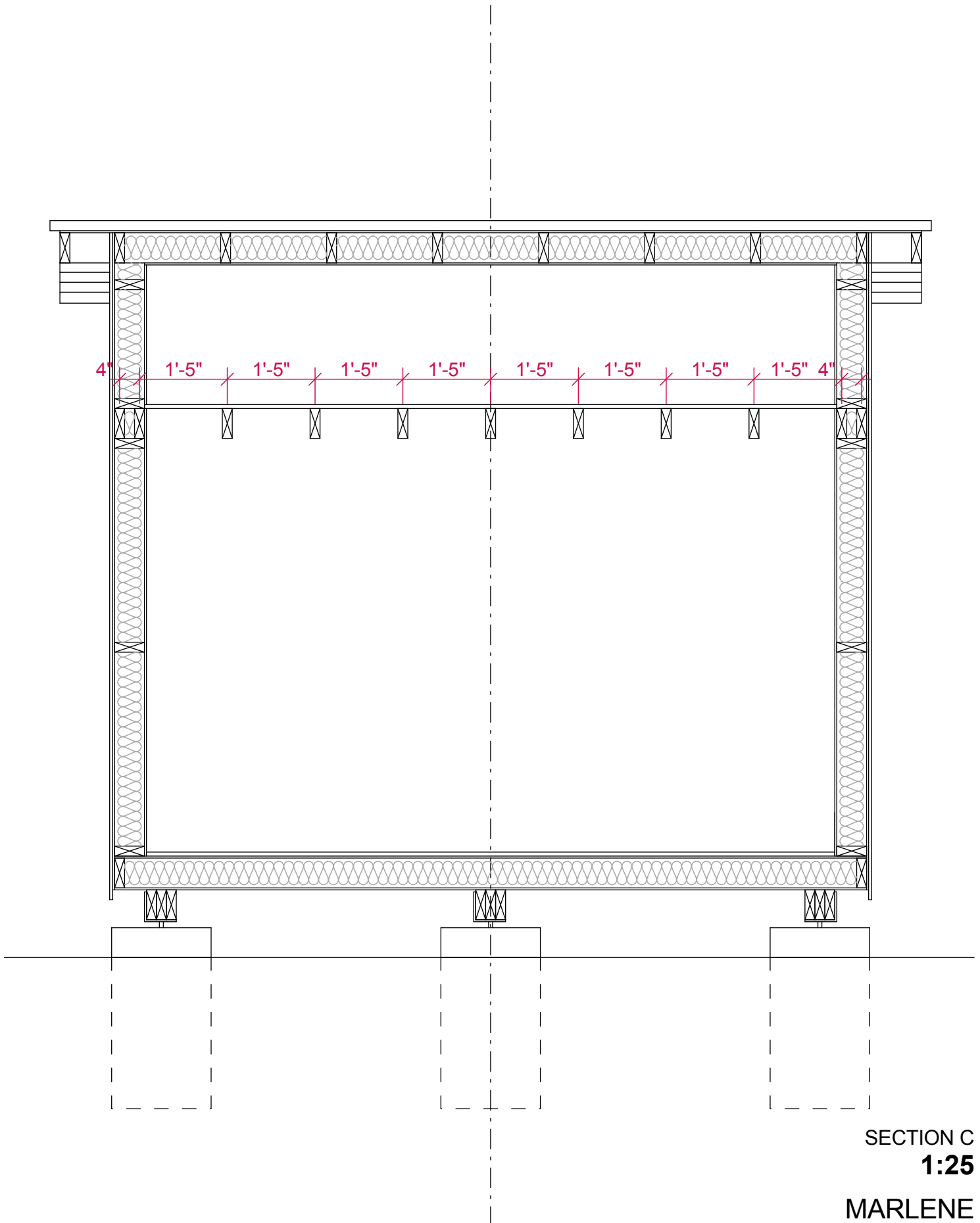


SECTION B  
1:35

MARLENE

Joshua Woodsman  
www.pinuphouses.com

# Section C in imperial measurements

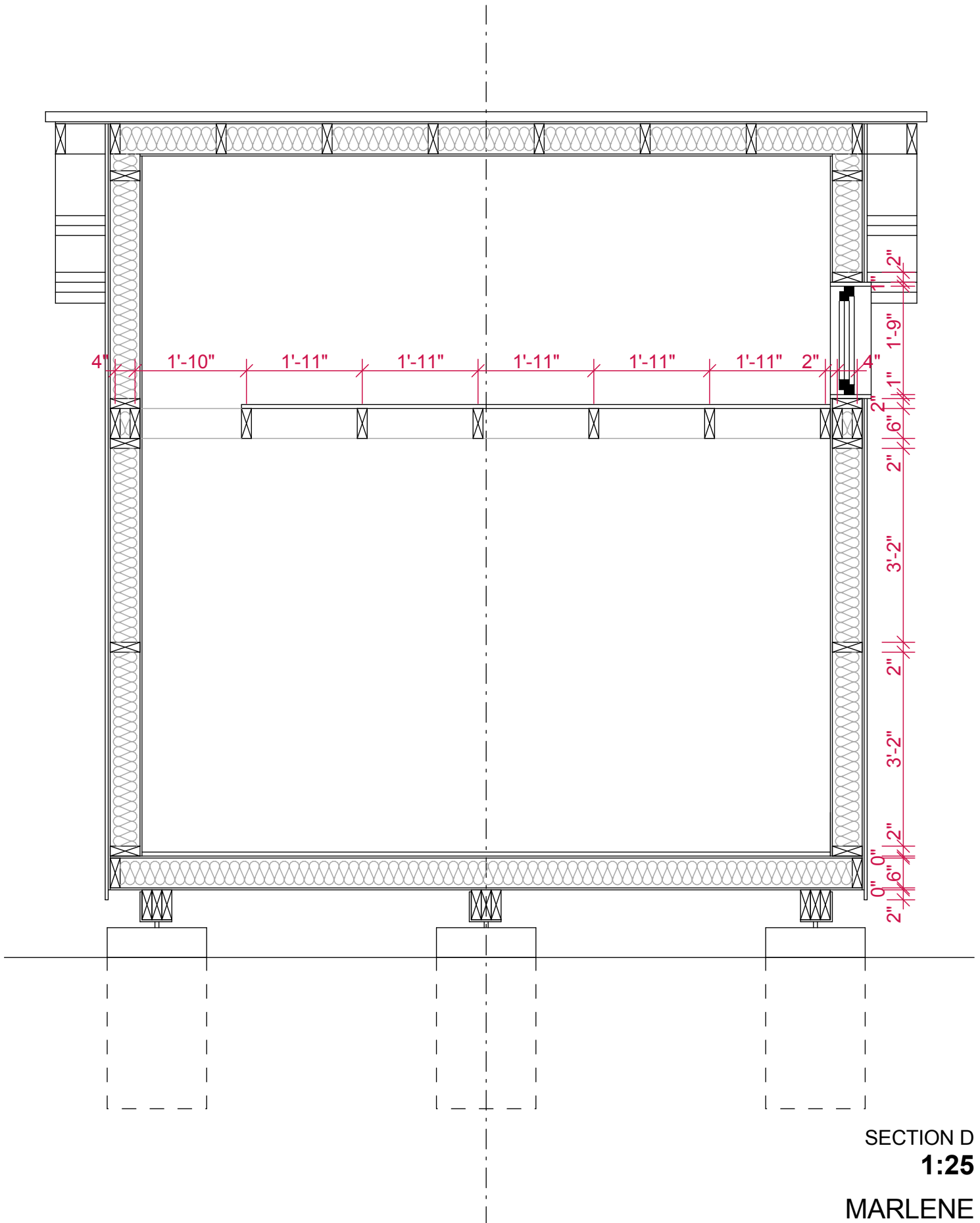


SECTION C  
**1:25**  
MARLENE

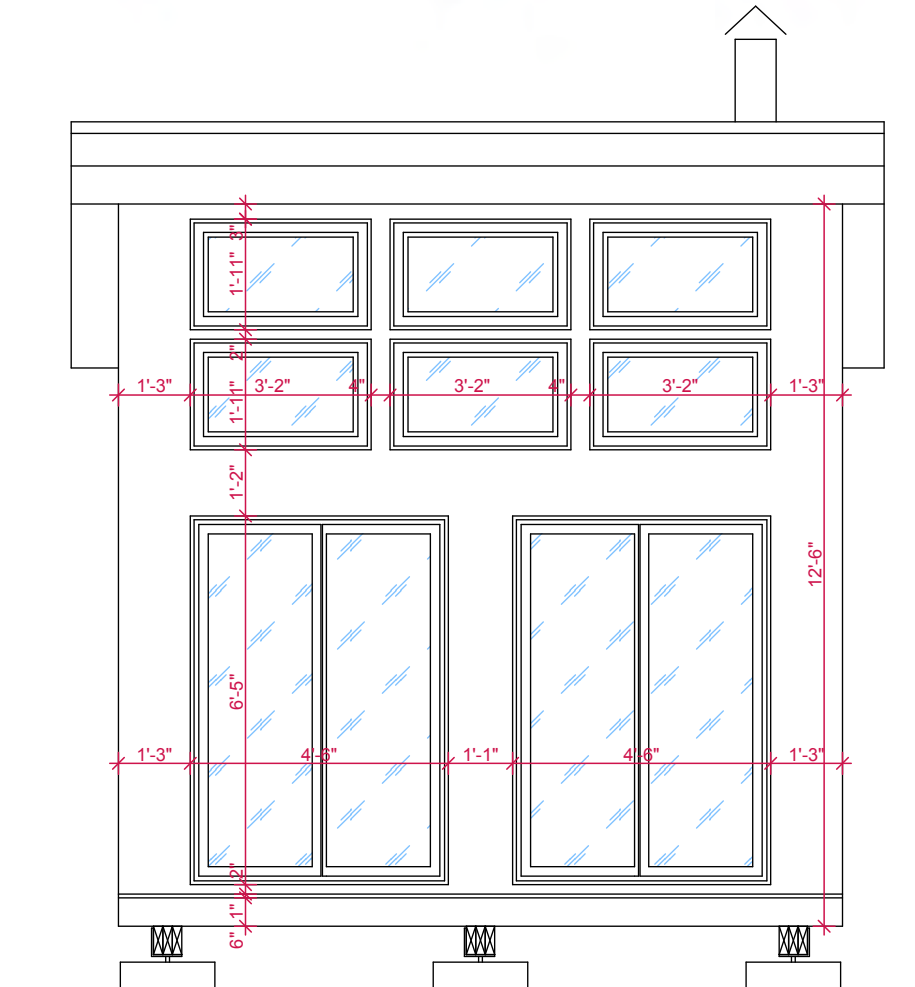
Joshua Woodsman  
www.pinuphouses.com



# Section D in imperial measurements



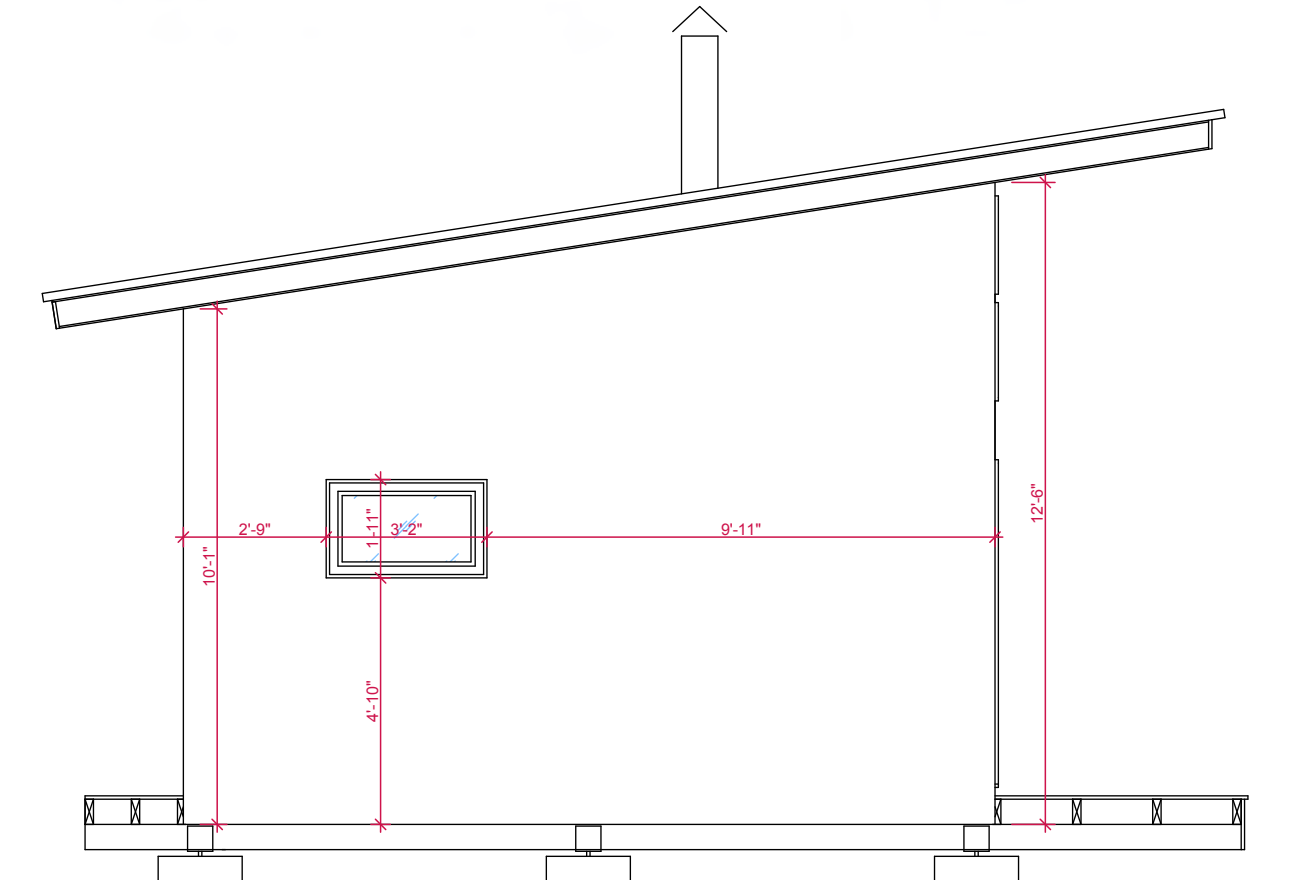
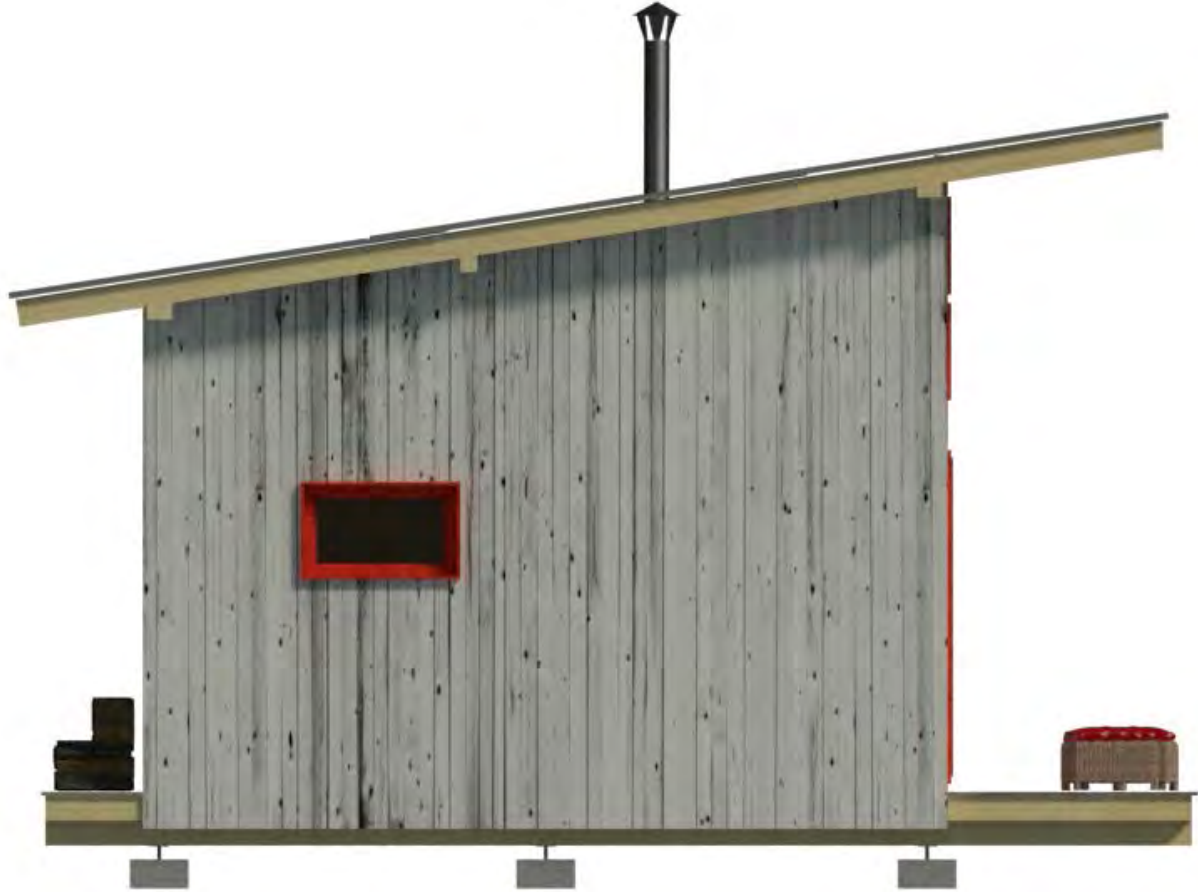
# Elevation A in imperial measurements



ELEVATION A  
**1:40**  
 MARLENE

Joshua Woodsman  
 www.pinuphouses.com

# Elevation B in imperial measurements

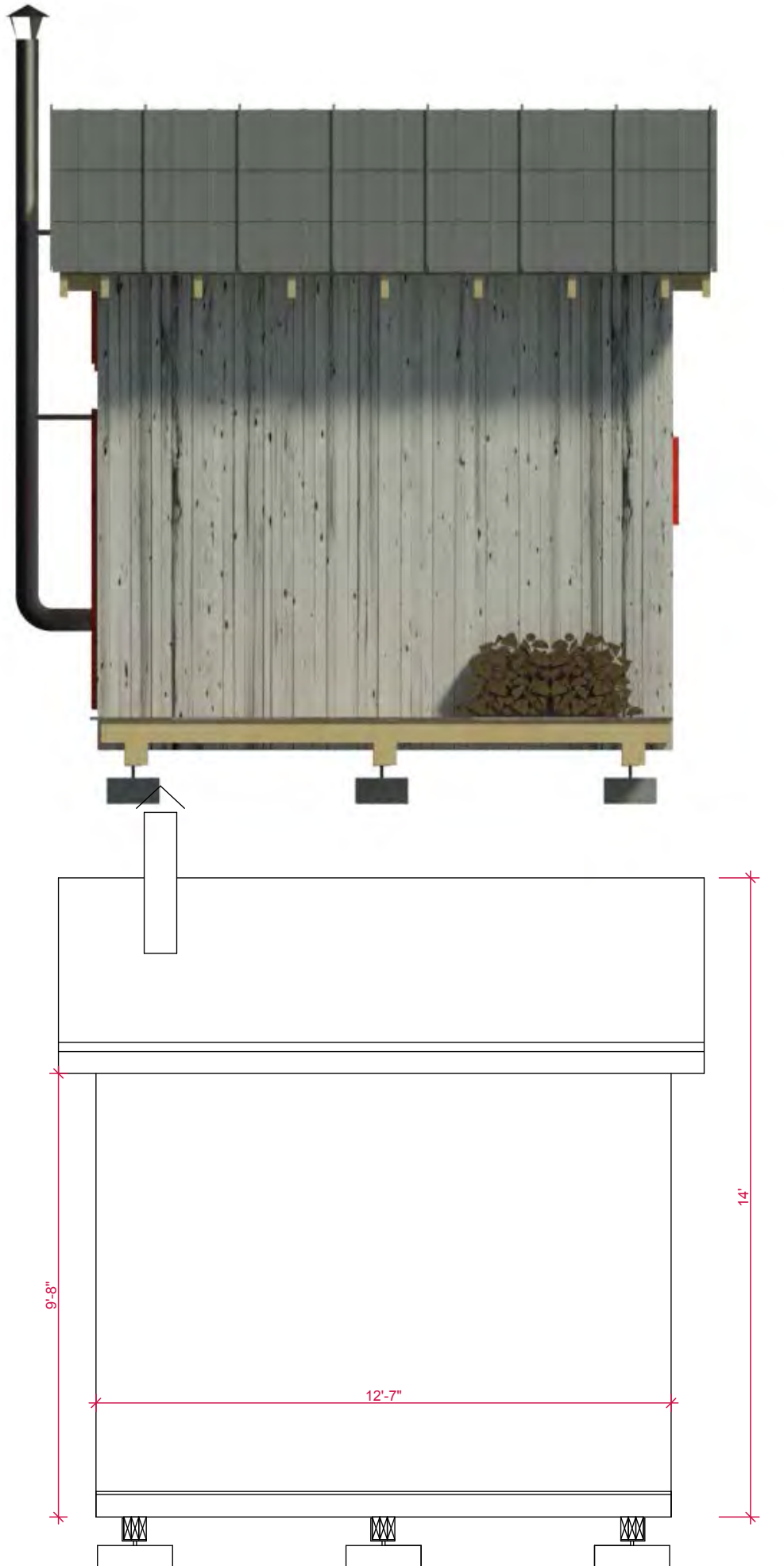


ELEVATION B  
1:45

MARLENE

Joshua Woodsman  
www.pinuphouses.com

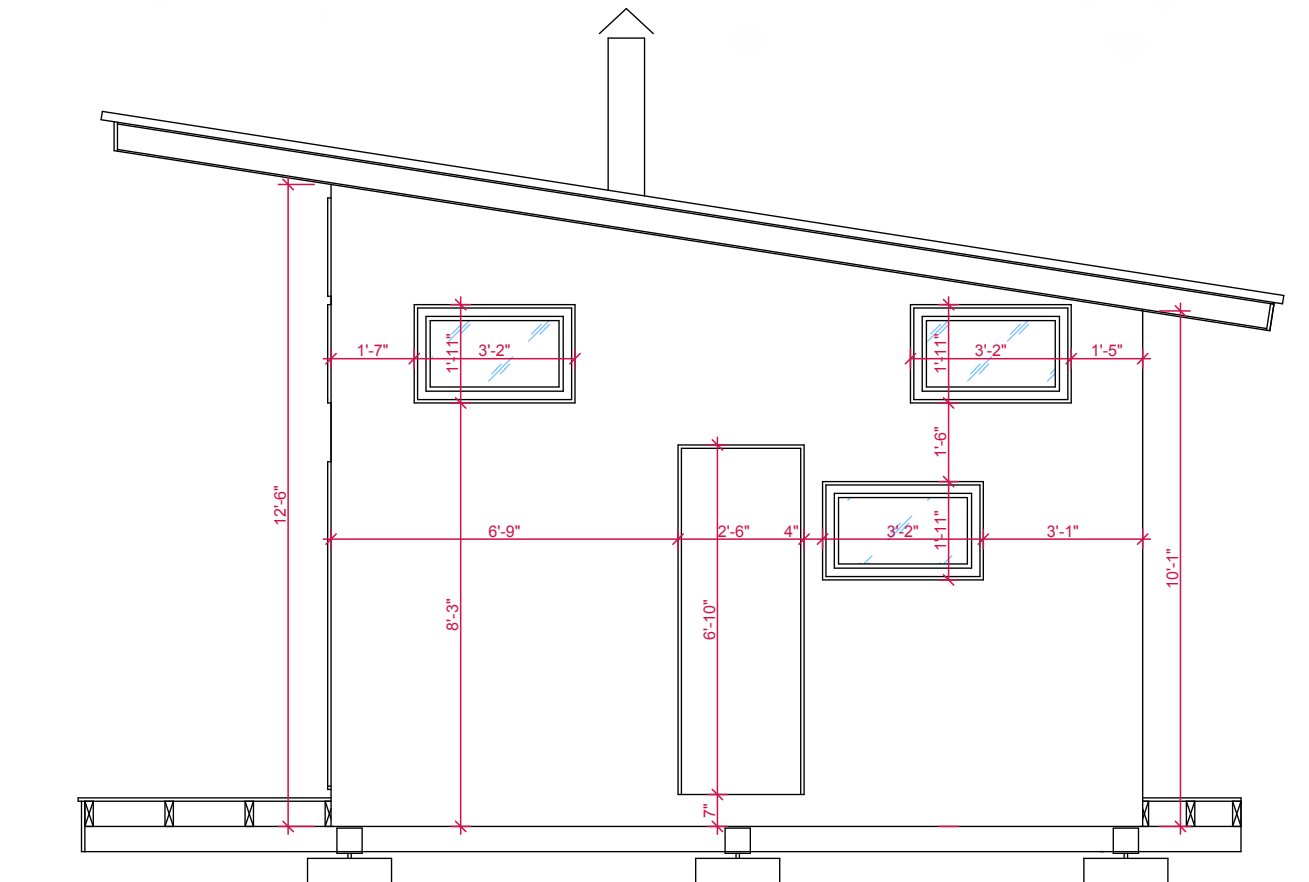
# Elevation C in imperial measurements



ELEVATION C  
**1:40**  
**MARLENE**

Joshua Woodsman  
www.pinuphouses.com

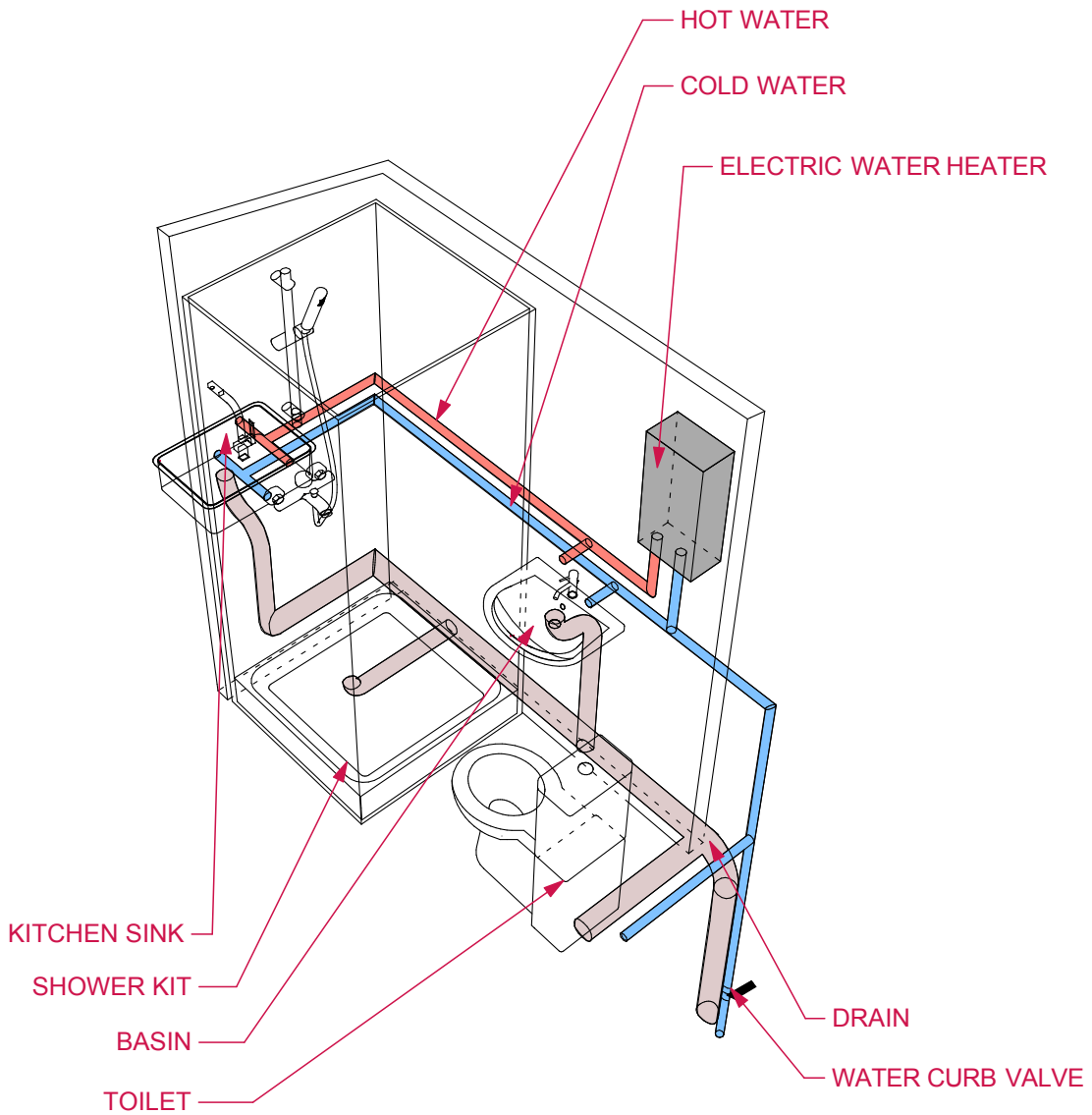
# Elevation D in imperial measurements



ELEVATION D  
1:45

MARLENE

Joshua Woodsman  
www.pinuphouses.com



**Standard fit corner shower kit**

32" x 32" (800 x 800 mm)

389 USD

link:

<http://www.homedepot.com/p/Unbranded-32-in-x-32-in-x-70-3-4-in-Standard-Fit-Corner-Shower-Kit-401060/100385923>



**Toilet**

14" x 23" (356 x 584mm)

570 USD

link:<http://www.pplmotorhomes.com/parts/rv-toilets-tanks/concerto-china-toilets.htm>



**Kitchen sink**

14 3/4" x 12 1/2" (375 x 318mm)

152 USD

link:<http://www.ebay.ie/itm/Small-Bowl-Stainless-Steel-Inset-Kitchen-Sink-Mixer-Tap-Brushed-Set-KST100-bs-/390869438193>



**Tiny cloakroom basin**

16" x 10" (406 x 254 mm)

66 USD

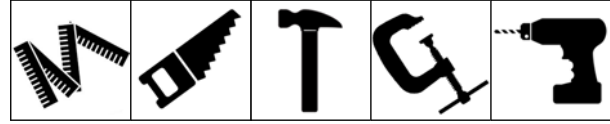
link:<http://www.ebay.co.uk/itm/Small-Compact-Mini-Tiny-Bathroom-Cloakroom-Basin-Sink-Wall-Hung-395-Tap-Waste-/311274372229>



**DRAIN & WATER**

**MARLENE**

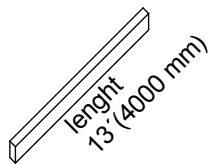
Joshua Woodsman  
www.pinuphouses.com



## WALLS

Assemble the walls on the ground using the level tool. Distribute the lower plates. In the next step, the vertical studs will be attached to them. You can place the plates and the plywood / OSB sheeting. Join to the board and level the structure using the level tool.

### Material list:



WALLS

It is necessary to measure the exact dimensions of all the structural elements directly at the construction site!

**MARLENE**

Joshua Woodsman  
www.pinuphouses.com

# Compare our Free vs. Premium plans

*(\*) - Partial dimensions in Free Edition*

Features	Free Edition	Premium Edition
Foundation Plans	✓	✓
Floor Plans	✓	✓
Cross Sections (*)	✓	✓
Elevations (*)	✓	✓
Drain & Water Schema	✓	✓
Electrical Wiring & Installation	✗	✓
Step-by-Step Construction Process	✗	✓
Full Materials & Cutting List	✗	✓
Metal Fasteners & Nails	✗	✓
Tools List	✗	✓
DWG Set of Plans	✗	✓
Technical Support	✗	✓
Plan Modification Services	✗	✓

[Click to get the Premium Plan](#)



# The Main Advantages of our Affordable Premium Plans

While our free plans can offer a tempting shortcut, they often fall short of providing enough details required for a smooth construction process. This turns out to be especially true if you are not experienced in construction or the DIY field in general. Let's explain how you can benefit by getting the Premium Plan.

**Close to 75% of our customers are DIY builders**

**What does it mean?**

In our experience, most of them (up to 90%) contact us for tech support and the rest use our plan modification services. So, by looking at the above stats, we may conclude that even with detailed Premium Plans, most DIY builders contact us for help or order additional services. For experienced DIYers, almost any plan, free or not, may work fine. However, a sizable number of them still buy full sets of plans. **Below are the main reasons.**

## **1. Save Time & Money with a List of Materials, Cutting, and Tools**

With a Full Materials & Cutting List, homeowners and contractors can accurately estimate the quantity and cost of materials needed. Naturally, this may reduce the construction budget and prevent wasting materials.

## **2. Save Time with Step-by-Step Guidance**

A Step-by-Step Construction Process guide is an important part of these plans, offering clear instructions for builders at every stage.

## **3. Save Time & Materials with Support and Services**

Premium Plans come with Technical Support to assist you with any questions or challenges that may arise during construction. Plan Modification Services are often needed to tailor the plans to unique site conditions or specific client requirements.

## **4. Metal Fasteners & Nails List = Structural Integrity**

The inclusion of specifications for correct Metal Fasteners & Nails guarantees that the structural components of your building are securely fastened, adhering to safety standards and enhancing the structure's longevity.

## **5. DWG Set of Plans for Flexibility and Customization**

DWG Set of Plans are provided for those who wish to customize their homes using design software. It allows for easy alterations to the original plan to suit personal tastes or accommodate unexpected changes.

## **6. No Costly Corrections due to Detailed Design and Precision**

Full house plans come with PDF drawings that provide a detailed view of every aspect of the home, from Electrical Wiring & Installation to the placement of each nail.